

LED Slim Downlight - SDL Series



Application: family room, bedroom, hallway, corridor, or any other common area in your living space.

Feature

- The ultra slim LED downlights/surface mini panel comes with separate steel encased LED driver with watertight seal
- Backlit technology gives more even and brighter light distribution
- Airtight & Type IC Rated: No housing Required
- Snap-in mounting springs and easy wiring access for fast & easy Installation: Save labor cost.
- Junction Box Included: No additional hardware required.
- Damp location rated and dimmable with approved dimmers
- Body: Durable, die cast aluminum alloy for optimal heat dissipation
- White, Nickel or Black for choice--Scratch resistant and smooth finish

Specifications

| Model | HY-SDL-R3-6W-5CCT | HY-SDL-R4-9W-5CCT | HY-SDL-S4-9W-5CCT | HY-SDL-R6-12W-5CCT | HY-SDL-S6-12W-5CCT | HY-SDL-R8-18W-5CCT |
|-------------------|--|-------------------|-------------------|--------------------|--------------------|--------------------|
| Size | 3" Round | 4" Round | 4" Square | 6" Round | 6" Square | 8" Round |
| Power | 6W | 9W | | 12W | | 18W |
| Input Voltage | 120V AC | | | | | |
| Frequency | 60Hz | | | | | 50Hz/60Hz |
| Dimming | Triac dimmable | | | | | 0-10V Dimmable |
| Lumen | 80LM/W | | | | | 85LM/W |
| Beam Angle | 120° | | | | | |
| CCT | 5CCT (2700K/3000K/3500K/4000K/5000K) Tunable | | | | | |
| CRI | >80 | | | | | |
| Working Life | Lumen Maintenance over 70% @ 360000+ Hours | | | | | |
| Oper. Temperature | -4°F to 104°F (-20°C to 40°C) | | | | | |
| Certification | ETL/Energy Star | | | | | |

LED Slim Downlight - SDL Series

DIMENSION

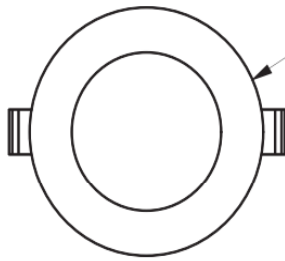
3" Round

4" Round

6" Round

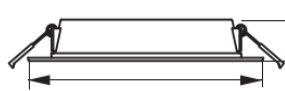
8" Round

Front View



3"Size: $\phi 3.86"$ ($\phi 98\text{mm}$)
 4"Size: $\phi 5.11"$ ($\phi 130\text{mm}$)
 6"Size: $\phi 7.28"$ ($\phi 185\text{mm}$)
 8"Size: $\phi 9.25"$ ($\phi 235\text{mm}$)

Side View



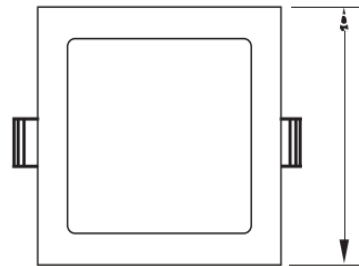
3"Size: 0.85" (21.5mm)
 4"Size: 0.99" (25.3mm)
 6"Size: 1.03" (26.3mm)
 8"Size: 1.07" (27.3mm)

3"Size: $\phi 3.86"$ ($\phi 98\text{mm}$)
 4"Size: $\phi 5.11"$ ($\phi 130\text{mm}$)
 6"Size: $\phi 7.28"$ ($\phi 185\text{mm}$)
 8"Size: $\phi 9.25"$ ($\phi 235\text{mm}$)

4" Square

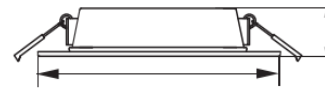
6" Square

Front View



4"Size: 5.03" (128mm)
 6"Size: 6.69" (170mm)

Side View

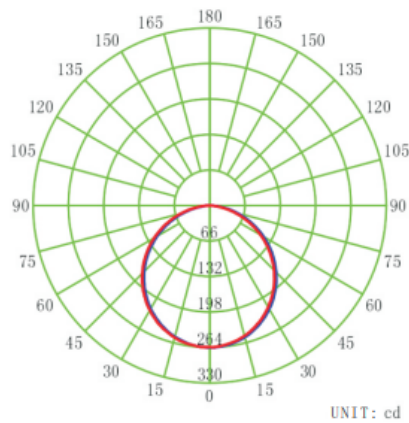


4"Size: 5.03" (128mm)
 6"Size: 6.69" (170mm)

4"Size: 1.03" (26.3mm)
 6"Size: 1.03" (26.3mm)

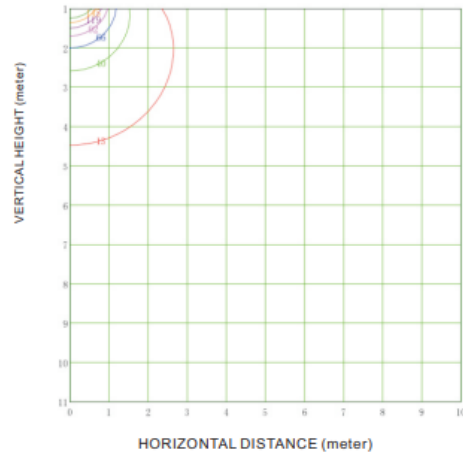
PHOTOMETRIC REPORT

9W 4" Round LED Ultra Slim Downlight
 LUMINOUS INTENSITY DISTRIBUTION DIAGRAM



— C0-C180 — C90-C270

VERTICAL EQUILUMINOUS CURVE



MINIMUM ALTITUDE 1.0 M
 MAXIMUM ALTITUDE 11.0 M
 MAXIMUM ILLUMINATION 264.0 lx

— (5%): 13.2 lx — (15%): 39.6 lx
 — (25%): 66.0 lx — (35%): 92.4 lx
 — (45%): 118.8 lx — (55%): 145.2 lx
 — (65%): 171.6 lx

LED Slim Downlight - SDL Series

PACKAGE INFO

| Model | HY-SDL-R3-6W-5CCT | HY-SDL-R4-9W-5CCT | HY-SDL-S4-9W-5CCT | HY-SDL-R6-12W-5CCT | HY-SDL-S6-12W-5CCT | HY-SDL-R8-18W-5CCT |
|----------------|-------------------|--------------------|--------------------|--------------------|--------------------|--------------------|
| Size | 3" Round | 4" Round | 4" Square | 6" Round | 6" Square | 8" Round |
| Qty/Pack | 20 PCS | | | | | 10 PCS |
| Package Size | 395X265X240mm | 395X315X290mm | 395X315X290mm | 395X415X400mm | 395X385X370mm | 520X400X260mm |
| | 15.55"X10.4"X9.4" | 15.55"X12.4"X11.4" | 15.55"X12.4"X11.4" | 15.6"X16.3"X15.7" | 15.6"X15.1"X14.57" | 20.47"X15.8"X10.2" |
| Package Weight | 6.5 kg/14.3 lbs | 7.3 kg/16.1 lbs | 7.4 kg/16.3 lbs | 9.5 kg/21 lbs | 9.3 kg/20.5 lbs | 6.4 kg/14.11 lbs |
| Package CBM | 0.025122 | 0.036083 | 0.036083 | 0.06557 | 0.056268 | 0.05408 |
| 40GP Capacity | ~46170 PCS | ~32140 PCS | ~32140 PCS | ~17690 PCS | ~20610 PCS | ~10720 PCS |
| 40HQ Capacity | ~54130 PCS | ~32140 PCS | ~37690 PCS | ~20740 PCS | ~24170 PCS | ~12570 PCS |
| 45HQ Capacity | ~62090 PCS | ~32140 PCS | ~43230 PCS | ~23790 PCS | ~27720 PCS | ~14420 PCS |

ORDERIN CODE DEFINITION

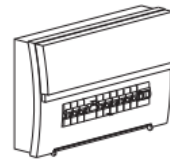
| Company Code | Product | Shape Size | | Watt | CCT |
|--------------|---------------------------------|--------------|---------------|------|--|
| HY | SDL: Ultra-Slim Downlight | R3: Round 3" | | 6W | 5CCT: 2700K/3000K/3500 K/4000K/5000K |
| | | R4: Round 4" | S4: Square 4" | 9W | |
| | | R6: Round 6" | S6: Square 6" | 12W | |
| | | R8: Round 8 | | 18W | |

INSTALLATION PROCEDURE



WARNING:

1. Switch off before installation.
2. Switch on only after complete installation and examination of the circuit.

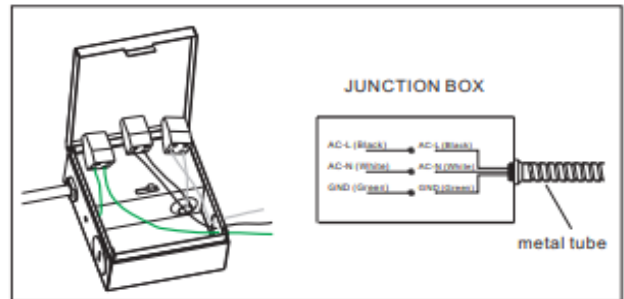


**Turn off
Power Supply**

LED Slim Downlight - SDL Series

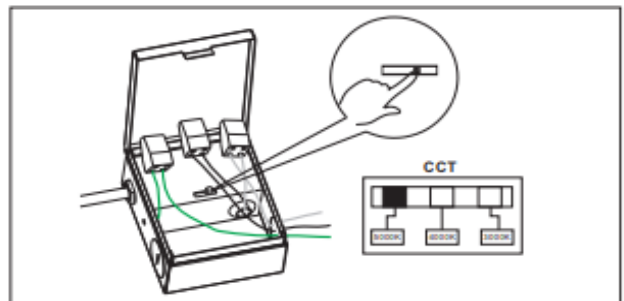
WIRING GUIDE

1. Open the hardwire box swing cover and remove one of the knock out holes on the side of the electrical box, based on the installation position.
2. Feed the wires from the electrical source through the open knock out hole in the electrical box
3. Connect black wire to live wire, white wire to neutral wire, and green wire with ground (as shown) and secure using wago connector. Close the cover of the box.



CCT Adjustable

Select color and move the CCT switch. you can change the color temperature to: 2700k/3000k/3500k/4000k/5000k by the CCT switch (If CCT selectable applicable)



INSTALLATION INSTRUCTION

Installation Preparation

1. Locate a suitable position to plate the fixture and open in accordance to the cut-hole dimensions (refer to Hole Cut Table for appropriate size).
2. Run electrical wire from the switch (power supply) through the mounting hole- use NMD90 Romex or BX cable.

Fixture Installation

1. Positioning the electrical box: Holding the clips, and push the fixture thru the cut-out hole in the ceiling and position it where desired.
2. Connecting the electrical box to the LED Downlight: Connect the remote driver box to the light fixture and Twist the two parts of the connector in opposite directions to lock them together.
3. Push the spring clip on the fixture upward and push the fixture through the ceiling hole and place fixture in the hole. Release the clips and the fixture will be pulled flush to the ceiling, making sure the spring clips are holding securely
4. Turn on the power and make sure your fixture is working properly. If the fixture is not lighten up in 5 seconds, turn power off, carefully remove the module and double check all wiring and replace.

| Ceiling | Hole Cut Size |
|---------|---|
| | 3" Round DOWNLIGHT: $\phi 3.15"$ (80mm) |
| | 4" Round DOWNLIGHT: $\phi 4.33"$ (110mm) |
| | 6" Round DOWNLIGHT: $\phi 6.29"$ (160mm) |
| | 8" Round DOWNLIGHT: $\phi 8.15"$ (207mm) |
| | 4" Square DOWNLIGHT: 3.94" X 3.94" (100 X 100mm) |
| | 6" Square DOWNLIGHT: 5.51" X 5.51" (140 X 140mm) |

